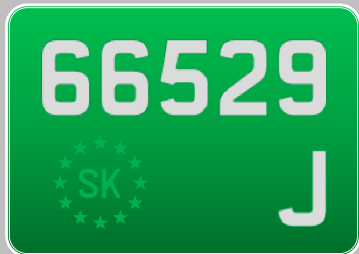
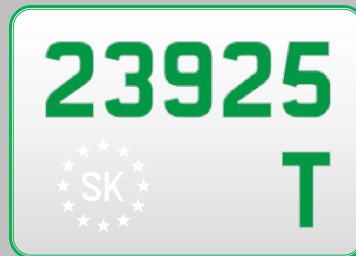


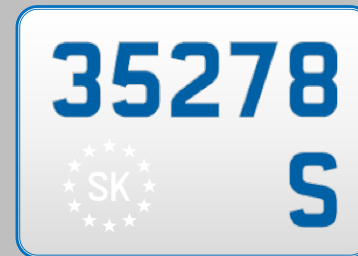
Type 5: Special purpose & special build vehicles, permanent, undated



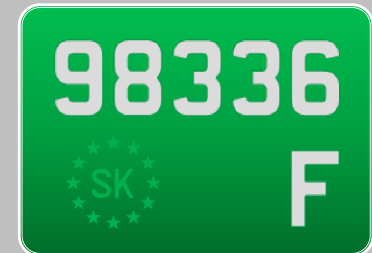
Type 5j
Forestry & agro
Database: 66529J



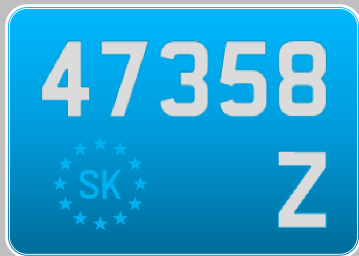
Type 5t
Prototype / test
Database: 23925T



Type 5s
Sports
Database: 35278S



Type 5f
Forestry & agro
Database: 98336F



Type 5z
public services
Database: 47358Z



Type 5a
driving school
Database: 37562A



Type 5h
historic car
Database: 56582H



Type 5v
historic car
Database: 77744V



Type 5l
driving school
Database: 99487L



Type 5d
disabled car
Database: 35726D



Type 5p
public services
Database: 96682P

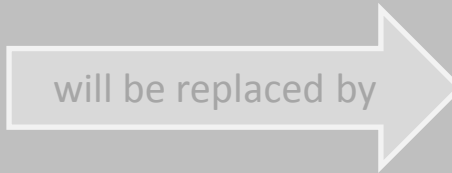


Type 6
Export, dated, temporary
DY (valid till 30Jun2014)
Database: 9588DY

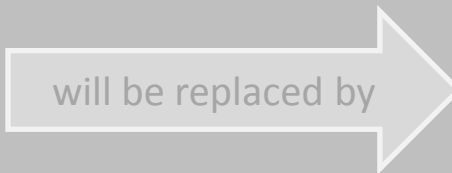
Type X: Temporary registrations, dated, valid 14 or 30 days

Self-adhesive sticker

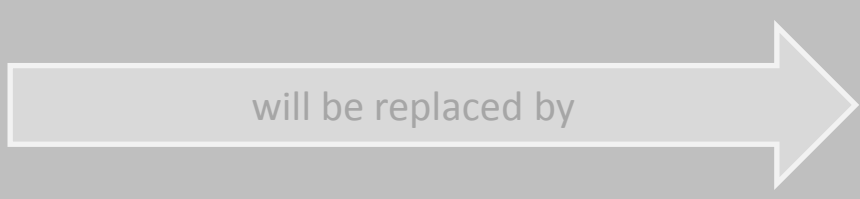
- X1 → self-adhesive face side
- X2 → self-adhesive back side
- X4 → self-adhesive back side



Type X1
Passenger cars, vans, small busses (<3.5t)
Dated: DX (first registration Mar/Apr 2014)
Temporary (14/30 days)
Database: DX49JT



Type X2
Heavy vehicles and busses (>3.5t)
Dated: DC (first registration May/Jun 2011)
Temporary (14/30 days)
Database: DC6627



Type X4
Temporary (14/30 days)
Database: DY06KP

Vehicle registration plate holders (plastic)

